

Transaction costs and charges.

All trustees of Defined Contribution pension schemes like Atlas are required by law to provide certain information about investment costs and charges to members, as well as provide illustrations that should help members to better understand the effect of these charges over time.

The charges deducted by Atlas can also be found in members' Investment Guides.

The tables below set out the charges specific to the section of Atlas that you are a member of. There are different charges for each of the different investment options available to you.

Charges are categorised by the UK Government as follows:

Transaction Costs

The costs and charges incurred as a result of the buying, selling, lending or borrowing of investments.

These costs can vary over time, depending on the level of activity the manager undertakes. For example, we expect Schroders' transaction costs to be higher than those of our passive managers because the investment mandate we gave them requires them to actively manage the portfolio. There is more information on this in our value for money assessment which can be found in the Chair's Statement in Atlas' Report and Accounts, which you can find [here](#).

Charges

Referred to in the Investment Guide as the Annual Management Charge, these are categorised as the costs and charges that the members pay, other than **Transaction Costs** and those incurred as a result of the holding or maintenance of property.

For Atlas members, the Annual Management Charge is made up of two key component parts:

- An administration charge, covering things such as general record keeping, collecting and investing contributions, paying member benefits, providing Benefits Statements and producing statutory accounts.
- An investment charge, which is the amount we pay for investment services. This includes the charge we pay to Scottish Widows (who provide the administration platform which hosts all of our investments), and the charges levied by each of the underlying investment managers.

There is a third component – called the Additional Fund Expenses (AFE). These are estimates of additional expenses incurred in the management of the fund which are based on the recent history of such charges for the fund in question. Consequently they cannot be guaranteed – they may be more or less than the estimate. The combination of Administration charge, investment charge and AFE is referred to as the Total Expense Ratio, or TER. The TER is shown in the tables below.

Series 3

The tables below also show the Transaction Costs and Charges (TER) for each of the funds available to you. The first table shows the figures before charges have been taken into account, and the second table shows the effect of these charges over time. These are only illustrations and should not be taken as an indicator of how your fund will grow.

To try and make the illustrations more meaningful to you, we have calculated the average age, contribution level and pension account value of all the active members in your particular section of Atlas. This is **Member A (Jos)**.

We have then adjusted this average to provide three alternative illustrations. The first (**Member B - Natalie**) is based on an active member who is 10 years younger than Jos, has half the average pension account value and who pays half the average level of contributions. The second (**Member C - Jofra**) is based on an active member who is 5 years older than Jos, has a pension account size which is 25% higher than his and whose contributions are 25% higher than his. And the third (**Member D - Anya**) is based on an active member who is 18 and has just joined Atlas; she has no previous pension account value.

We have also shown these different illustrations for deferred members (those who have left Atlas); these members (**Ben, Laura and Eoin**) no longer contribute into their pension account, but the same adjustments apply.

The columns that are highlighted show the investment period up until each member's 68th birthday, when we assume their contributions will stop and they will take their pension account. We have, however, shown both longer and shorter time lines so you can see the effect of charges over different time periods. No contributions are included beyond age 68.

Lastly – we have shown an example of the effect of drawdown on a member's pension account (**Member H - Nasser**). This is when your pension account remains invested with Atlas and you take (or 'draw down') a regular income. Remember that, with drawdown, your income isn't guaranteed for life – your money may run out before you die.

For this illustration we have assumed that Nasser has a pension account value (after taking his tax free cash) of £100,000. We have then assumed that Nasser draws down £4,000 each year in monthly instalments, and that he increases this rate of drawdown each year by 2.5% to help offset the effects of inflation.

Remember, these are intended only as guides. You can ask us for more information on your actual investments and others available to you by contacting the Atlas Administration team on 03451213389 or by email at memberenquiries@atlasmastertrust.co.uk. Alternatively, you can write to them at PO Box 555, Stead House, Darlington, DL1 9YT.

You can request paper copies of this costs and charges information, although the Trustee is not obliged to provide a hard copy if they have good reason to believe that you can access the information you require from the website.

You can also ask us for the International Securities Identification Number (ISIN) of the fund or funds in which you invest (or any that you are considering investing in). This is a unique reference number for each of the pooled investment funds available which will enable you to obtain more detailed information about these funds, including their objectives and past performance.

Member A: Jos

Projected pension account in today's money				Before Charges										
Member A: Jos				Years (investment period)										
Fund	Total Expense Ratio	Transaction Costs	Assumed Investment Growth	1	3	5	10	15	20	25	68 th birthday 28	30	35	40
Atlas Active Corporate Bond Fund	0.510%	0.030%	2.96%	£3,987	£7,986	£12,022	£22,271	£32,752	£43,471	£54,432	£61,128	£61,677	£63,074	£64,502
Atlas Active Emerging Markets Equity Fund	1.170%	0.298%	5.51%	£4,059	£8,359	£12,916	£25,532	£40,113	£56,964	£76,439	£89,550	£94,887	£109,662	£126,737
Atlas Active Multi Asset Fund	0.600%	0.223%	3.76%	£4,009	£8,102	£12,296	£23,241	£34,875	£47,242	£60,388	£68,670	£70,368	£74,801	£79,513
Atlas Asia Pacific (ex Japan) Equity Index Tracker Fund	0.300%	0.017%	4.90%	£4,041	£8,269	£12,697	£24,706	£38,188	£53,325	£70,319	£81,500	£85,361	£95,834	£107,591
Atlas Cash Fund	0.250%	0.011%	0.90%	£3,928	£7,694	£11,344	£19,981	£27,965	£35,344	£42,166	£46,008	£44,583	£41,210	£38,093
Atlas Corporate Bond Index Tracker Fund	0.250%	0.000%	2.91%	£3,985	£7,979	£12,005	£22,212	£32,625	£43,248	£54,085	£60,691	£61,178	£62,411	£63,669
Atlas Emerging Markets Index Tracker Fund	0.400%	0.025%	5.70%	£4,064	£8,388	£12,985	£25,796	£40,735	£58,157	£78,473	£92,249	£98,099	£114,398	£133,406
Atlas Ethical Fund	0.930%	0.123%	4.90%	£4,041	£8,269	£12,697	£24,706	£38,188	£53,325	£70,319	£81,500	£85,361	£95,834	£107,591
Atlas Europe (ex UK) Equity Index Tracker Fund	0.300%	0.014%	4.90%	£4,041	£8,269	£12,697	£24,706	£38,188	£53,325	£70,319	£81,500	£85,361	£95,834	£107,591
Atlas Flexible Access Retirement Fund	0.560%	0.092%	1.59%	£3,948	£7,791	£11,567	£20,716	£29,467	£37,836	£45,840	£50,474	£49,582	£47,420	£45,352
Atlas Flexible Pre-Retirement Fund	0.350%	0.041%	2.74%	£3,980	£7,955	£11,948	£22,013	£32,196	£42,499	£52,923	£59,237	£59,515	£60,215	£60,923
Atlas Global Equity Index Tracker Fund	0.270%	0.006%	4.98%	£4,044	£8,281	£12,725	£24,813	£38,435	£53,786	£71,087	£82,505	£86,545	£97,534	£109,919
Atlas Inflation-Linked Annuity Target Fund	0.250%	0.041%	1.67%	£3,950	£7,803	£11,593	£20,804	£29,648	£38,139	£46,292	£51,028	£50,205	£48,205	£46,284
Atlas Japan Equity Index Tracker Fund	0.300%	0.007%	4.90%	£4,041	£8,269	£12,697	£24,706	£38,188	£53,325	£70,319	£81,500	£85,361	£95,834	£107,591
Atlas Level Annuity Target Fund	0.250%	0.026%	2.07%	£3,961	£7,859	£11,724	£21,247	£30,571	£39,701	£48,641	£53,916	£53,464	£52,352	£51,263
Atlas Multi Asset Absolute Return Fund	0.750%	0.377%	3.70%	£4,008	£8,093	£12,275	£23,166	£34,710	£46,945	£59,914	£68,065	£69,668	£73,843	£78,268

Series 3

Atlas Multi Asset Portfolio 1	0.554%	0.248%	4.38%	£4,027	£8,193	£12,512	£24,025	£36,633	£50,440	£65,561	£75,315	£78,103	£85,534	£93,671
Atlas Multi Asset Portfolio 2	0.506%	0.204%	3.79%	£4,010	£8,106	£12,306	£23,278	£34,958	£47,391	£60,626	£68,974	£70,721	£75,285	£80,143
Atlas Multi Asset Portfolio 3	0.467%	0.142%	3.21%	£3,994	£8,022	£12,107	£22,569	£33,399	£44,608	£56,212	£63,369	£64,250	£66,506	£68,841
Atlas North American Equity Index Tracker Fund	0.220%	0.000%	4.90%	£4,041	£8,269	£12,697	£24,706	£38,188	£53,325	£70,319	£81,500	£85,361	£95,834	£107,591
Atlas Over 15 Years Gilts Index Tracker Fund	0.250%	0.038%	0.90%	£3,928	£7,694	£11,344	£19,981	£27,965	£35,344	£42,166	£46,008	£44,583	£41,210	£38,093
Atlas Over 5 Years Index-Linked Gilts Index Tracker Fund	0.250%	0.102%	0.90%	£3,928	£7,694	£11,344	£19,981	£27,965	£35,344	£42,166	£46,008	£44,583	£41,210	£38,093
Atlas Passive Multi Asset Fund	0.470%	0.004%	4.02%	£4,017	£8,140	£12,386	£23,566	£35,600	£48,552	£62,494	£71,365	£73,498	£79,111	£85,154
Atlas Retirement Income Drawdown Fund	0.590%	0.041%	3.53%	£4,003	£8,069	£12,217	£22,957	£34,248	£46,118	£58,597	£66,389	£67,730	£71,202	£74,852
Atlas Shariah Compliant Fund	0.450%	0.025%	4.93%	£4,042	£8,273	£12,708	£24,746	£38,280	£53,497	£70,606	£81,875	£85,803	£96,468	£108,458
Atlas Sustainable Equity Fund	0.545%	0.467%	5.00%	£4,044	£8,284	£12,733	£24,839	£38,496	£53,902	£71,281	£82,758	£86,845	£97,965	£110,509
Atlas UK Direct Property Fund	0.750%	0.041%	3.34%	£3,997	£8,041	£12,152	£22,726	£33,741	£45,214	£57,166	£64,574	£65,637	£68,371	£71,219
Atlas UK Equity Index Tracker Fund	0.300%	0.000%	4.90%	£4,041	£8,269	£12,697	£24,706	£38,188	£53,325	£70,319	£81,500	£85,361	£95,834	£107,591
Atlas World (ex UK) Equity Index Tracker Fund	0.300%	0.000%	4.93%	£4,042	£8,273	£12,708	£24,746	£38,280	£53,497	£70,606	£81,875	£85,803	£96,468	£108,458

Notes for Jos' projected figures

- Projected pension pot values are shown in today's terms, and do not need to be reduced further for the effect of future inflation
- We have assumed that Jos has built up a pot of £2,000.00.
- He's currently 40 and in the first year (of the table above), he will contribute £2,000 into his pension account.
- His contributions will increase every year by 2.5% and he will stop contributing when he reaches age 68.
- Inflation (the increase in the cost of living) is assumed to increase each year at a rate of 2.5%.
- These costs and charges are based on the year to 31/03/21.



Series 3

Projected pension account in today's money				After all charges + costs deducted										
Member A: Jos				Years (investment period)										
Fund	Total Expense Ratio	Transaction Costs	Assumed Investment Growth	1	3	5	10	15	20	25	68 th birthday 28	30	35	40
Atlas Active Corporate Bond Fund	0.510%	0.030%	2.42%	£3,971	£7,909	£11,841	£21,643	£31,407	£41,133	£50,821	£56,615	£56,527	£56,306	£56,087
Atlas Active Emerging Markets Equity Fund	1.170%	0.298%	4.04%	£4,017	£8,143	£12,394	£23,594	£35,661	£48,664	£62,675	£71,598	£73,768	£79,486	£85,646
Atlas Active Multi Asset Fund	0.600%	0.223%	2.94%	£3,986	£7,983	£12,014	£22,244	£32,693	£43,366	£54,269	£60,923	£61,443	£62,763	£64,111
Atlas Asia Pacific (ex Japan) Equity Index Tracker Fund	0.300%	0.017%	4.58%	£4,033	£8,222	£12,584	£24,288	£37,231	£51,543	£67,370	£77,659	£80,847	£89,403	£98,864
Atlas Cash Fund	0.250%	0.011%	0.64%	£3,921	£7,658	£11,261	£19,711	£27,421	£34,456	£40,876	£44,454	£42,855	£39,103	£35,680
Atlas Corporate Bond Index Tracker Fund	0.250%	0.000%	2.66%	£3,978	£7,943	£11,921	£21,920	£31,997	£42,153	£52,388	£58,568	£58,751	£59,211	£59,674
Atlas Emerging Markets Index Tracker Fund	0.400%	0.025%	5.27%	£4,052	£8,324	£12,831	£25,210	£39,357	£55,526	£74,005	£86,336	£91,074	£104,086	£118,957
Atlas Ethical Fund	0.930%	0.123%	3.85%	£4,012	£8,115	£12,326	£23,348	£35,114	£47,673	£61,079	£69,553	£71,393	£76,207	£81,346
Atlas Europe (ex UK) Equity Index Tracker Fund	0.300%	0.014%	4.59%	£4,033	£8,223	£12,585	£24,293	£37,241	£51,562	£67,401	£77,699	£80,895	£89,470	£98,954
Atlas Flexible Access Retirement Fund	0.560%	0.092%	0.94%	£3,929	£7,700	£11,356	£20,020	£28,044	£35,474	£42,355	£46,237	£44,838	£41,524	£38,454
Atlas Flexible Pre-Retirement Fund	0.350%	0.041%	2.35%	£3,969	£7,899	£11,817	£21,562	£31,236	£40,838	£50,371	£56,057	£55,892	£55,482	£55,075
Atlas Global Equity Index Tracker Fund	0.270%	0.006%	4.70%	£4,036	£8,240	£12,627	£24,447	£37,593	£52,214	£68,476	£79,097	£82,535	£91,798	£102,100
Atlas Inflation-Linked Annuity Target Fund	0.250%	0.041%	1.38%	£3,942	£7,761	£11,498	£20,488	£28,997	£37,051	£44,673	£49,050	£47,982	£45,415	£42,985
Atlas Japan Equity Index Tracker Fund	0.300%	0.007%	4.59%	£4,033	£8,224	£12,588	£24,302	£37,262	£51,600	£67,464	£77,782	£80,991	£89,606	£99,138
Atlas Level Annuity Target Fund	0.250%	0.026%	1.79%	£3,953	£7,820	£11,634	£20,940	£29,931	£38,617	£47,008	£51,905	£51,193	£49,455	£47,776
Atlas Multi Asset Absolute Return Fund	0.750%	0.377%	2.57%	£3,976	£7,931	£11,892	£21,819	£31,781	£41,780	£51,813	£57,851	£57,933	£58,140	£58,347

Series 3

Atlas Multi Asset Portfolio 1	0.554%	0.248%	3.58%	£4,004	£8,076	£12,233	£23,016	£34,378	£46,351	£58,966	£66,858	£68,272	£71,939	£75,803
Atlas Multi Asset Portfolio 2	0.506%	0.204%	3.08%	£3,990	£8,004	£12,063	£22,414	£33,062	£44,014	£55,281	£62,195	£62,901	£64,702	£66,555
Atlas Multi Asset Portfolio 3	0.467%	0.142%	2.60%	£3,976	£7,935	£11,901	£21,851	£31,850	£41,898	£51,996	£58,078	£58,193	£58,479	£58,767
Atlas North American Equity Index Tracker Fund	0.220%	0.000%	4.68%	£4,035	£8,237	£12,618	£24,415	£37,521	£52,081	£68,257	£78,811	£82,199	£91,320	£101,453
Atlas Over 15 Years Gilts Index Tracker Fund	0.250%	0.038%	0.61%	£3,920	£7,654	£11,252	£19,683	£27,365	£34,365	£40,744	£44,297	£42,680	£38,891	£35,439
Atlas Over 5 Years Index-Linked Gilts Index Tracker Fund	0.250%	0.102%	0.55%	£3,918	£7,645	£11,232	£19,617	£27,235	£34,153	£40,438	£43,929	£42,272	£38,398	£34,878
Atlas Passive Multi Asset Fund	0.470%	0.004%	3.55%	£4,003	£8,071	£12,222	£22,977	£34,292	£46,196	£58,721	£66,547	£67,912	£71,450	£75,171
Atlas Retirement Income Drawdown Fund	0.590%	0.041%	2.90%	£3,985	£7,978	£12,002	£22,199	£32,597	£43,199	£54,009	£60,596	£61,069	£62,267	£63,489
Atlas Shariah Compliant Fund	0.450%	0.025%	4.46%	£4,029	£8,204	£12,539	£24,122	£36,853	£50,846	£66,225	£76,175	£79,109	£86,948	£95,564
Atlas Sustainable Equity Fund	0.545%	0.467%	3.99%	£4,016	£8,135	£12,375	£23,526	£35,510	£48,390	£62,232	£71,029	£73,106	£78,570	£84,441
Atlas UK Direct Property Fund	0.750%	0.041%	2.55%	£3,975	£7,927	£11,884	£21,791	£31,723	£41,678	£51,657	£57,656	£57,711	£57,850	£57,989
Atlas UK Equity Index Tracker Fund	0.300%	0.000%	4.60%	£4,033	£8,225	£12,590	£24,310	£37,282	£51,637	£67,525	£77,860	£81,083	£89,737	£99,314
Atlas World (ex UK) Equity Index Tracker Fund	0.300%	0.000%	4.63%	£4,034	£8,229	£12,601	£24,350	£37,371	£51,803	£67,798	£78,215	£81,500	£90,327	£100,110

Notes for Jos' projected figures

- Projected pension pot values are shown in today's terms, and do not need to be reduced further for the effect of future inflation.
- We have assumed that Jos has built up a pot of £2,000.00.
- He's currently 40 and in the first year (of the table above), he will contribute £2,000 into his pension account.
- His contributions will increase every year by 2.5% and he will stop contributing when he reaches age 68.
- Inflation (the increase in the cost of living) is assumed to increase each year at a rate of 2.5%.
- These costs and charges are based on the year to 31/03/21.



Member B: Natalie

Projected pension account in today's money				Before Charges										
Member B: Natalie				Years (investment period)										
Fund	Total Expense Ratio	Transaction Costs	Assumed Investment Growth	1	3	5	10	15	20	25	30	35	68 th birthday 38	40
Atlas Active Corporate Bond Fund	0.510%	0.030%	2.96%	£1,993	£3,993	£6,011	£11,136	£16,376	£21,735	£27,216	£32,821	£38,552	£42,053	£42,432
Atlas Active Emerging Markets Equity Fund	1.170%	0.298%	5.51%	£2,029	£4,180	£6,458	£12,766	£20,057	£28,482	£38,219	£49,473	£62,479	£71,235	£75,480
Atlas Active Multi Asset Fund	0.600%	0.223%	3.76%	£2,005	£4,051	£6,148	£11,620	£17,437	£23,621	£30,194	£37,181	£44,608	£49,287	£50,506
Atlas Asia Pacific (ex Japan) Equity Index Tracker Fund	0.300%	0.017%	4.90%	£2,021	£4,134	£6,348	£12,353	£19,094	£26,662	£35,159	£44,699	£55,408	£62,455	£65,414
Atlas Cash Fund	0.250%	0.011%	0.90%	£1,964	£3,847	£5,672	£9,990	£13,982	£17,672	£21,083	£24,235	£27,150	£28,791	£27,899
Atlas Corporate Bond Index Tracker Fund	0.250%	0.000%	2.91%	£1,993	£3,990	£6,003	£11,106	£16,313	£21,624	£27,042	£32,570	£38,209	£41,647	£41,981
Atlas Emerging Markets Index Tracker Fund	0.400%	0.025%	5.70%	£2,032	£4,194	£6,493	£12,898	£20,368	£29,078	£39,237	£51,082	£64,896	£74,264	£78,973
Atlas Ethical Fund	0.930%	0.123%	4.90%	£2,021	£4,134	£6,348	£12,353	£19,094	£26,662	£35,159	£44,699	£55,408	£62,455	£65,414
Atlas Europe (ex UK) Equity Index Tracker Fund	0.300%	0.014%	4.90%	£2,021	£4,134	£6,348	£12,353	£19,094	£26,662	£35,159	£44,699	£55,408	£62,455	£65,414
Atlas Flexible Access Retirement Fund	0.560%	0.092%	1.59%	£1,974	£3,896	£5,783	£10,358	£14,734	£18,918	£22,920	£26,748	£30,408	£32,527	£31,952
Atlas Flexible Pre-Retirement Fund	0.350%	0.041%	2.74%	£1,990	£3,977	£5,974	£11,006	£16,098	£21,250	£26,462	£31,735	£37,071	£40,302	£40,491
Atlas Global Equity Index Tracker Fund	0.270%	0.006%	4.98%	£2,022	£4,140	£6,363	£12,406	£19,217	£26,893	£35,543	£45,292	£56,279	£63,530	£66,641
Atlas Inflation-Linked Annuity Target Fund	0.250%	0.041%	1.67%	£1,975	£3,901	£5,796	£10,402	£14,824	£19,070	£23,146	£27,060	£30,819	£33,001	£32,469
Atlas Japan Equity Index Tracker Fund	0.300%	0.007%	4.90%	£2,021	£4,134	£6,348	£12,353	£19,094	£26,662	£35,159	£44,699	£55,408	£62,455	£65,414
Atlas Level Annuity Target Fund	0.250%	0.026%	2.07%	£1,981	£3,930	£5,862	£10,623	£15,285	£19,850	£24,321	£28,698	£32,984	£35,513	£35,215
Atlas Multi Asset Absolute Return Fund	0.750%	0.377%	3.70%	£2,004	£4,047	£6,138	£11,583	£17,355	£23,473	£29,957	£36,830	£44,115	£48,693	£49,840

Series 3

Atlas Multi Asset Portfolio 1	0.554%	0.248%	4.38%	£2,013	£4,096	£6,256	£12,013	£18,316	£25,220	£32,780	£41,060	£50,127	£55,977	£58,049
Atlas Multi Asset Portfolio 2	0.506%	0.204%	3.79%	£2,005	£4,053	£6,153	£11,639	£17,479	£23,695	£30,313	£37,358	£44,857	£49,587	£50,843
Atlas Multi Asset Portfolio 3	0.467%	0.142%	3.21%	£1,997	£4,011	£6,054	£11,285	£16,699	£22,304	£28,106	£34,111	£40,328	£44,162	£44,776
Atlas North American Equity Index Tracker Fund	0.220%	0.000%	4.90%	£2,021	£4,134	£6,348	£12,353	£19,094	£26,662	£35,159	£44,699	£55,408	£62,455	£65,414
Atlas Over 15 Years Gilts Index Tracker Fund	0.250%	0.038%	0.90%	£1,964	£3,847	£5,672	£9,990	£13,982	£17,672	£21,083	£24,235	£27,150	£28,791	£27,899
Atlas Over 5 Years Index-Linked Gilts Index Tracker Fund	0.250%	0.102%	0.90%	£1,964	£3,847	£5,672	£9,990	£13,982	£17,672	£21,083	£24,235	£27,150	£28,791	£27,899
Atlas Passive Multi Asset Fund	0.470%	0.004%	4.02%	£2,008	£4,070	£6,193	£11,783	£17,800	£24,276	£31,247	£38,751	£46,827	£51,966	£53,519
Atlas Retirement Income Drawdown Fund	0.590%	0.041%	3.53%	£2,001	£4,034	£6,108	£11,479	£17,124	£23,059	£29,298	£35,857	£42,753	£47,058	£48,009
Atlas Shariah Compliant Fund	0.450%	0.025%	4.93%	£2,021	£4,137	£6,354	£12,373	£19,140	£26,749	£35,303	£44,920	£55,733	£62,855	£65,871
Atlas Sustainable Equity Fund	0.545%	0.467%	5.00%	£2,022	£4,142	£6,366	£12,420	£19,248	£26,951	£35,640	£45,442	£56,499	£63,802	£66,952
Atlas UK Direct Property Fund	0.750%	0.041%	3.34%	£1,999	£4,021	£6,076	£11,363	£16,870	£22,607	£28,583	£34,808	£41,292	£45,311	£46,057
Atlas UK Equity Index Tracker Fund	0.300%	0.000%	4.90%	£2,021	£4,134	£6,348	£12,353	£19,094	£26,662	£35,159	£44,699	£55,408	£62,455	£65,414
Atlas World (ex UK) Equity Index Tracker Fund	0.300%	0.000%	4.93%	£2,021	£4,137	£6,354	£12,373	£19,140	£26,749	£35,303	£44,920	£55,733	£62,855	£65,871

Notes for Natalie’s projected figures

- Projected pension pot values are shown in today's terms, and do not need to be reduced further for the effect of future inflation.
- We have assumed that Natalie has built up a pot of £1,000.00.
- She’s currently 30 and in the first year (of the table above), she will contribute £1,000 into her pension account.
- Her contributions will increase every year by 2.5% and she will stop contributing when she reaches age 68.
- Inflation (the increase in the cost of living) is assumed to increase each year at a rate of 2.5%.
- These costs and charges are based on the year to 31/03/21.



Series 3

Projected pension account in today's money				After all charges + costs deducted										
Member B: Natalie				Years (investment period)										
Fund	Total Expense Ratio	Transaction Costs	Assumed Investment Growth	1	3	5	10	15	20	25	30	35	68 th birthday 38	40
Atlas Active Corporate Bond Fund	0.510%	0.030%	2.42%	£1,986	£3,954	£5,920	£10,821	£15,703	£20,566	£25,410	£30,235	£35,042	£37,916	£37,857
Atlas Active Emerging Markets Equity Fund	1.170%	0.298%	4.04%	£2,009	£4,072	£6,197	£11,797	£17,831	£24,332	£31,338	£38,886	£47,020	£52,199	£53,781
Atlas Active Multi Asset Fund	0.600%	0.223%	2.94%	£1,993	£3,992	£6,007	£11,122	£16,346	£21,683	£27,135	£32,703	£38,391	£41,863	£42,220
Atlas Asia Pacific (ex Japan) Equity Index Tracker Fund	0.300%	0.017%	4.58%	£2,016	£4,111	£6,292	£12,144	£18,615	£25,772	£33,685	£42,436	£52,113	£58,404	£60,801
Atlas Cash Fund	0.250%	0.011%	0.64%	£1,960	£3,829	£5,630	£9,855	£13,710	£17,228	£20,438	£23,367	£26,039	£27,529	£26,538
Atlas Corporate Bond Index Tracker Fund	0.250%	0.000%	2.66%	£1,989	£3,972	£5,961	£10,960	£15,998	£21,076	£26,194	£31,352	£36,550	£39,688	£39,812
Atlas Emerging Markets Index Tracker Fund	0.400%	0.025%	5.27%	£2,026	£4,162	£6,416	£12,605	£19,679	£27,763	£37,002	£47,562	£59,630	£67,684	£71,397
Atlas Ethical Fund	0.930%	0.123%	3.85%	£2,006	£4,057	£6,163	£11,674	£17,557	£23,837	£30,540	£37,695	£45,332	£50,160	£51,487
Atlas Europe (ex UK) Equity Index Tracker Fund	0.300%	0.014%	4.59%	£2,016	£4,111	£6,293	£12,146	£18,621	£25,781	£33,701	£42,460	£52,147	£58,446	£60,849
Atlas Flexible Access Retirement Fund	0.560%	0.092%	0.94%	£1,965	£3,850	£5,678	£10,010	£14,022	£17,737	£21,178	£24,364	£27,315	£28,979	£28,102
Atlas Flexible Pre-Retirement Fund	0.350%	0.041%	2.35%	£1,985	£3,949	£5,909	£10,781	£15,618	£20,419	£25,185	£29,917	£34,613	£37,414	£37,304
Atlas Global Equity Index Tracker Fund	0.270%	0.006%	4.70%	£2,018	£4,120	£6,313	£12,223	£18,796	£26,107	£34,238	£43,282	£53,341	£59,910	£62,514
Atlas Inflation-Linked Annuity Target Fund	0.250%	0.041%	1.38%	£1,971	£3,881	£5,749	£10,244	£14,498	£18,525	£22,337	£25,944	£29,358	£31,319	£30,637
Atlas Japan Equity Index Tracker Fund	0.300%	0.007%	4.59%	£2,016	£4,112	£6,294	£12,151	£18,631	£25,800	£33,732	£42,508	£52,217	£58,531	£60,947
Atlas Level Annuity Target Fund	0.250%	0.026%	1.79%	£1,977	£3,910	£5,817	£10,470	£14,966	£19,308	£23,504	£27,557	£31,472	£33,757	£33,294
Atlas Multi Asset Absolute Return Fund	0.750%	0.377%	2.57%	£1,988	£3,965	£5,946	£10,909	£15,891	£20,890	£25,907	£30,941	£35,994	£39,034	£39,090
Atlas Multi Asset Portfolio 1	0.554%	0.248%	3.58%	£2,002	£4,038	£6,117	£11,508	£17,189	£23,175	£29,483	£36,129	£43,133	£47,514	£48,519

Series 3

Atlas Multi Asset Portfolio 2	0.506%	0.204%	3.08%	£1,995	£4,002	£6,032	£11,207	£16,531	£22,007	£27,640	£33,435	£39,395	£43,053	£43,542
Atlas Multi Asset Portfolio 3	0.467%	0.142%	2.60%	£1,988	£3,967	£5,951	£10,926	£15,925	£20,949	£25,998	£31,072	£36,170	£39,242	£39,319
Atlas North American Equity Index Tracker Fund	0.220%	0.000%	4.68%	£2,018	£4,118	£6,309	£12,208	£18,760	£26,040	£34,128	£43,113	£53,096	£59,609	£62,172
Atlas Over 15 Years Gilts Index Tracker Fund	0.250%	0.038%	0.61%	£1,960	£3,827	£5,626	£9,841	£13,683	£17,183	£20,372	£23,279	£25,927	£27,402	£26,401
Atlas Over 5 Years Index-Linked Gilts Index Tracker Fund	0.250%	0.102%	0.55%	£1,959	£3,823	£5,616	£9,809	£13,617	£17,077	£20,219	£23,074	£25,666	£27,106	£26,084
Atlas Passive Multi Asset Fund	0.470%	0.004%	3.55%	£2,002	£4,035	£6,111	£11,489	£17,146	£23,098	£29,360	£35,949	£42,880	£47,212	£48,180
Atlas Retirement Income Drawdown Fund	0.590%	0.041%	2.90%	£1,992	£3,989	£6,001	£11,100	£16,299	£21,600	£27,004	£32,515	£38,135	£41,559	£41,883
Atlas Shariah Compliant Fund	0.450%	0.025%	4.46%	£2,014	£4,102	£6,270	£12,061	£18,427	£25,423	£33,113	£41,564	£50,853	£56,863	£59,053
Atlas Sustainable Equity Fund	0.545%	0.467%	3.99%	£2,008	£4,068	£6,188	£11,763	£17,755	£24,195	£31,116	£38,554	£46,548	£51,629	£53,139
Atlas UK Direct Property Fund	0.750%	0.041%	2.55%	£1,987	£3,964	£5,942	£10,896	£15,861	£20,839	£25,829	£30,830	£35,844	£38,858	£38,895
Atlas UK Equity Index Tracker Fund	0.300%	0.000%	4.60%	£2,016	£4,112	£6,295	£12,155	£18,641	£25,819	£33,762	£42,554	£52,284	£58,613	£61,040
Atlas World (ex UK) Equity Index Tracker Fund	0.300%	0.000%	4.63%	£2,017	£4,115	£6,300	£12,175	£18,686	£25,902	£33,899	£42,763	£52,587	£58,984	£61,461

Notes for Natalie's projected figures

- Projected pension pot values are shown in today's terms, and do not need to be reduced further for the effect of future inflation.
- We have assumed that Natalie has built up a pot of £1,000.00.
- She's currently 30 and in the first year (of the table above), she will contribute £1,000 into her pension account.
- Her contributions will increase every year by 2.5% and she will stop contributing when she reaches age 68.
- Inflation (the increase in the cost of living) is assumed to increase each year at a rate of 2.5%.
- These costs and charges are based on the year to 31/03/21.



Member C: Jofra

Projected pension account in today's money				Before Charges										
Member C: Jofra				Years (investment period)										
Fund	Total Expense Ratio	Transaction Costs	Assumed Investment Growth	1	3	5	10	15	20	68 th birthday 23	25	30	35	40
Atlas Active Corporate Bond Fund	0.510%	0.030%	2.96%	£4,983	£9,983	£15,028	£27,839	£40,941	£54,339	£62,523	£63,085	£64,513	£65,974	£67,468
Atlas Active Emerging Markets Equity Fund	1.170%	0.298%	5.51%	£5,073	£10,449	£16,145	£31,916	£50,141	£71,205	£85,386	£90,475	£104,563	£120,844	£139,661
Atlas Active Multi Asset Fund	0.600%	0.223%	3.76%	£5,012	£10,128	£15,370	£29,051	£43,594	£59,052	£68,791	£70,493	£74,933	£79,654	£84,671
Atlas Asia Pacific (ex Japan) Equity Index Tracker Fund	0.300%	0.017%	4.90%	£5,052	£10,336	£15,871	£30,882	£47,735	£66,656	£79,105	£82,853	£93,018	£104,430	£117,242
Atlas Cash Fund	0.250%	0.011%	0.90%	£4,910	£9,618	£14,180	£24,976	£34,956	£44,180	£49,377	£47,847	£44,227	£40,882	£37,789
Atlas Corporate Bond Index Tracker Fund	0.250%	0.000%	2.91%	£4,981	£9,974	£15,007	£27,765	£40,781	£54,060	£62,155	£62,653	£63,916	£65,205	£66,519
Atlas Emerging Markets Index Tracker Fund	0.400%	0.025%	5.70%	£5,080	£10,485	£16,232	£32,245	£50,919	£72,696	£87,463	£93,009	£108,463	£126,484	£147,500
Atlas Ethical Fund	0.930%	0.123%	4.90%	£5,052	£10,336	£15,871	£30,882	£47,735	£66,656	£79,105	£82,853	£93,018	£104,430	£117,242
Atlas Europe (ex UK) Equity Index Tracker Fund	0.300%	0.014%	4.90%	£5,052	£10,336	£15,871	£30,882	£47,735	£66,656	£79,105	£82,853	£93,018	£104,430	£117,242
Atlas Flexible Access Retirement Fund	0.560%	0.092%	1.59%	£4,935	£9,739	£14,459	£25,896	£36,834	£47,295	£53,352	£52,408	£50,123	£47,937	£45,847
Atlas Flexible Pre-Retirement Fund	0.350%	0.041%	2.74%	£4,975	£9,943	£14,935	£27,516	£40,245	£53,124	£60,924	£61,210	£61,930	£62,658	£63,395
Atlas Global Equity Index Tracker Fund	0.270%	0.006%	4.98%	£5,055	£10,351	£15,907	£31,016	£48,043	£67,233	£79,897	£83,810	£94,452	£106,444	£119,960
Atlas Inflation-Linked Annuity Target Fund	0.250%	0.041%	1.67%	£4,937	£9,753	£14,491	£26,005	£37,060	£47,674	£53,839	£52,970	£50,860	£48,834	£46,888
Atlas Japan Equity Index Tracker Fund	0.300%	0.007%	4.90%	£5,052	£10,336	£15,871	£30,882	£47,735	£66,656	£79,105	£82,853	£93,018	£104,430	£117,242
Atlas Level Annuity Target Fund	0.250%	0.026%	2.07%	£4,952	£9,824	£14,656	£26,558	£38,213	£49,626	£56,359	£55,888	£54,725	£53,587	£52,472
Atlas Multi Asset Absolute Return Fund	0.750%	0.377%	3.70%	£5,009	£10,117	£15,344	£28,958	£43,388	£58,682	£68,295	£69,903	£74,092	£78,532	£83,238

Series 3

Atlas Multi Asset Portfolio 1	0.554%	0.248%	4.38%	£5,033	£10,241	£15,641	£30,031	£45,791	£63,050	£74,184	£76,930	£84,249	£92,264	£101,041
Atlas Multi Asset Portfolio 2	0.506%	0.204%	3.79%	£5,013	£10,133	£15,383	£29,098	£43,697	£59,238	£69,041	£70,790	£75,358	£80,221	£85,397
Atlas Multi Asset Portfolio 3	0.467%	0.142%	3.21%	£4,992	£10,028	£15,134	£28,212	£41,748	£55,761	£64,403	£65,298	£67,591	£69,965	£72,422
Atlas North American Equity Index Tracker Fund	0.220%	0.000%	4.90%	£5,052	£10,336	£15,871	£30,882	£47,735	£66,656	£79,105	£82,853	£93,018	£104,430	£117,242
Atlas Over 15 Years Gilts Index Tracker Fund	0.250%	0.038%	0.90%	£4,910	£9,618	£14,180	£24,976	£34,956	£44,180	£49,377	£47,847	£44,227	£40,882	£37,789
Atlas Over 5 Years Index-Linked Gilts Index Tracker Fund	0.250%	0.102%	0.90%	£4,910	£9,618	£14,180	£24,976	£34,956	£44,180	£49,377	£47,847	£44,227	£40,882	£37,789
Atlas Passive Multi Asset Fund	0.470%	0.004%	4.02%	£5,021	£10,175	£15,483	£29,458	£44,500	£60,690	£70,993	£73,114	£78,698	£84,709	£91,179
Atlas Retirement Income Drawdown Fund	0.590%	0.041%	3.53%	£5,003	£10,086	£15,271	£28,696	£42,810	£57,648	£66,913	£68,264	£71,764	£75,443	£79,310
Atlas Shariah Compliant Fund	0.450%	0.025%	4.93%	£5,053	£10,342	£15,884	£30,932	£47,851	£66,872	£79,401	£83,211	£93,553	£105,181	£118,254
Atlas Sustainable Equity Fund	0.545%	0.467%	5.00%	£5,055	£10,355	£15,916	£31,049	£48,120	£67,378	£80,096	£84,051	£94,814	£106,954	£120,649
Atlas UK Direct Property Fund	0.750%	0.041%	3.34%	£4,997	£10,051	£15,189	£28,407	£42,176	£56,518	£65,408	£66,485	£69,254	£72,139	£75,144
Atlas UK Equity Index Tracker Fund	0.300%	0.000%	4.90%	£5,052	£10,336	£15,871	£30,882	£47,735	£66,656	£79,105	£82,853	£93,018	£104,430	£117,242
Atlas World (ex UK) Equity Index Tracker Fund	0.300%	0.000%	4.93%	£5,053	£10,342	£15,884	£30,932	£47,851	£66,872	£79,401	£83,211	£93,553	£105,181	£118,254

Notes for Jofra's projected figures

- Projected pension pot values are shown in today's terms, and do not need to be reduced further for the effect of future inflation.
- We have assumed that Jofra has built up a pot of £2,500.00.
- He's currently 45 and in the first year (of the table above), he will contribute £2,500 into his pension account.
- His contributions will increase every year by 2.5% and he will stop contributing when he reaches age 68.
- Inflation (the increase in the cost of living) is assumed to increase each year at a rate of 2.5%.
- These costs and charges are based on the year to 31/03/21.



Series 3

Projected pension account in today's money				After all charges + costs deducted										
Member C: Jofra				Years (investment period)										
Fund	Total Expense Ratio	Transaction Costs	Assumed Investment Growth	1	3	5	10	15	20	68 th birthday 23	25	30	35	40
Atlas Active Corporate Bond Fund	0.510%	0.030%	2.42%	£4,964	£9,886	£14,801	£27,054	£39,259	£51,416	£58,688	£58,596	£58,367	£58,140	£57,913
Atlas Active Emerging Markets Equity Fund	1.170%	0.298%	4.04%	£5,021	£10,179	£15,492	£29,492	£44,577	£60,830	£71,181	£73,339	£79,023	£85,148	£91,748
Atlas Active Multi Asset Fund	0.600%	0.223%	2.94%	£4,982	£9,979	£15,018	£27,805	£40,866	£54,208	£62,350	£62,883	£64,233	£65,613	£67,023
Atlas Asia Pacific (ex Japan) Equity Index Tracker Fund	0.300%	0.017%	4.58%	£5,041	£10,278	£15,730	£30,360	£46,539	£64,429	£76,060	£79,182	£87,561	£96,827	£107,074
Atlas Cash Fund	0.250%	0.011%	0.64%	£4,901	£9,572	£14,076	£24,638	£34,276	£43,070	£47,973	£46,247	£42,198	£38,504	£35,133
Atlas Corporate Bond Index Tracker Fund	0.250%	0.000%	2.66%	£4,973	£9,929	£14,901	£27,400	£39,996	£52,691	£60,355	£60,544	£61,018	£61,496	£61,977
Atlas Emerging Markets Index Tracker Fund	0.400%	0.025%	5.27%	£5,065	£10,406	£16,039	£31,512	£49,197	£69,407	£82,895	£87,443	£99,937	£114,216	£130,534
Atlas Ethical Fund	0.930%	0.123%	3.85%	£5,015	£10,143	£15,408	£29,186	£43,893	£59,592	£69,515	£71,353	£76,165	£81,301	£86,784
Atlas Europe (ex UK) Equity Index Tracker Fund	0.300%	0.014%	4.59%	£5,041	£10,279	£15,732	£30,366	£46,551	£64,453	£76,092	£79,221	£87,619	£96,906	£107,179
Atlas Flexible Access Retirement Fund	0.560%	0.092%	0.94%	£4,911	£9,624	£14,195	£25,025	£35,055	£44,343	£49,583	£48,083	£44,528	£41,236	£38,187
Atlas Flexible Pre-Retirement Fund	0.350%	0.041%	2.35%	£4,961	£9,874	£14,771	£26,953	£39,045	£51,048	£58,208	£58,037	£57,611	£57,189	£56,769
Atlas Global Equity Index Tracker Fund	0.270%	0.006%	4.70%	£5,045	£10,300	£15,784	£30,558	£46,991	£65,268	£77,204	£80,560	£89,601	£99,656	£110,841
Atlas Inflation-Linked Annuity Target Fund	0.250%	0.041%	1.38%	£4,927	£9,702	£14,373	£25,610	£36,246	£46,313	£52,093	£50,960	£48,233	£45,652	£43,209
Atlas Japan Equity Index Tracker Fund	0.300%	0.007%	4.59%	£5,041	£10,280	£15,735	£30,377	£46,577	£64,501	£76,157	£79,300	£87,735	£97,067	£107,393
Atlas Level Annuity Target Fund	0.250%	0.026%	1.79%	£4,942	£9,775	£14,542	£26,176	£37,414	£48,271	£54,608	£53,858	£52,030	£50,264	£48,558
Atlas Multi Asset Absolute Return Fund	0.750%	0.377%	2.57%	£4,969	£9,914	£14,865	£27,274	£39,727	£52,224	£59,744	£59,830	£60,043	£60,257	£60,472
Atlas Multi Asset Portfolio 1	0.554%	0.248%	3.58%	£5,005	£10,095	£15,292	£28,770	£42,973	£57,938	£67,301	£68,724	£72,415	£76,304	£80,403
Atlas Multi Asset Portfolio 2	0.506%	0.204%	3.08%	£4,987	£10,005	£15,079	£28,018	£41,327	£55,018	£63,420	£64,140	£65,977	£67,867	£69,810

Series 3

Atlas Multi Asset Portfolio 3	0.467%	0.142%	2.60%	£4,970	£9,919	£14,876	£27,314	£39,812	£52,373	£59,939	£60,057	£60,352	£60,650	£60,948
Atlas North American Equity Index Tracker Fund	0.220%	0.000%	4.68%	£5,044	£10,296	£15,773	£30,519	£46,901	£65,101	£76,977	£80,286	£89,195	£99,092	£110,087
Atlas Over 15 Years Gilts Index Tracker Fund	0.250%	0.038%	0.61%	£4,900	£9,568	£14,065	£24,603	£34,206	£42,957	£47,830	£46,084	£41,993	£38,265	£34,868
Atlas Over 5 Years Index-Linked Gilts Index Tracker Fund	0.250%	0.102%	0.55%	£4,898	£9,557	£14,040	£24,522	£34,043	£42,692	£47,496	£45,704	£41,515	£37,710	£34,254
Atlas Passive Multi Asset Fund	0.470%	0.004%	3.55%	£5,004	£10,089	£15,278	£28,721	£42,865	£57,746	£67,043	£68,419	£71,983	£75,732	£79,677
Atlas Retirement Income Drawdown Fund	0.590%	0.041%	2.90%	£4,981	£9,972	£15,002	£27,749	£40,747	£53,999	£62,075	£62,559	£63,786	£65,038	£66,314
Atlas Shariah Compliant Fund	0.450%	0.025%	4.46%	£5,036	£10,254	£15,674	£30,153	£46,067	£63,558	£74,873	£77,757	£85,462	£93,931	£103,239
Atlas Sustainable Equity Fund	0.545%	0.467%	3.99%	£5,020	£10,169	£15,469	£29,407	£44,387	£60,487	£70,719	£72,787	£78,227	£84,073	£90,356
Atlas UK Direct Property Fund	0.750%	0.041%	2.55%	£4,969	£9,909	£14,855	£27,239	£39,653	£52,098	£59,578	£59,635	£59,779	£59,922	£60,066
Atlas UK Equity Index Tracker Fund	0.300%	0.000%	4.60%	£5,041	£10,281	£15,738	£30,388	£46,602	£64,546	£76,220	£79,375	£87,846	£97,221	£107,597
Atlas World (ex UK) Equity Index Tracker Fund	0.300%	0.000%	4.63%	£5,042	£10,287	£15,751	£30,437	£46,714	£64,754	£76,503	£79,715	£88,349	£97,918	£108,524

Notes for Jofra's projected figures

- Projected pension pot values are shown in today's terms, and do not need to be reduced further for the effect of future inflation.
- We have assumed that Jofra has built up a pot of £2,500.00.
- He's currently 45 and in the first year (of the table above), he will contribute £2,500 into his pension account.
- His contributions will increase every year by 2.5% and he will stop contributing when he reaches age 68.
- Inflation (the increase in the cost of living) is assumed to increase each year at a rate of 2.5%.
- These costs and charges are based on the year to 31/03/21.



Member D: Anya

Projected pension account in today's money				Before Charges										
Member D: Anya				Years (investment period)										
Fund	Total Expense Ratio	Transaction Costs	Assumed investment growth	1	3	5	10	15	20	25	30	35	40	68 th birthday 50
Atlas Active Corporate Bond Fund	0.510%	0.030%	2.96%	£989	£2,980	£4,988	£10,090	£15,307	£20,642	£26,098	£31,677	£37,383	£43,217	£55,286
Atlas Active Emerging Markets Equity Fund	1.170%	0.298%	5.51%	£1,000	£3,089	£5,302	£11,431	£18,513	£26,698	£36,158	£47,090	£59,725	£74,327	£110,707
Atlas Active Multi Asset Fund	0.600%	0.223%	3.76%	£992	£3,014	£5,085	£10,490	£16,236	£22,344	£28,837	£35,738	£43,075	£50,873	£67,975
Atlas Asia Pacific (ex Japan) Equity Index Tracker Fund	0.300%	0.017%	4.90%	£997	£3,063	£5,226	£11,093	£17,679	£25,074	£33,376	£42,696	£53,160	£64,908	£92,904
Atlas Cash Fund	0.250%	0.011%	0.90%	£980	£2,893	£4,748	£9,136	£13,192	£16,942	£20,408	£23,612	£26,573	£29,310	£34,180
Atlas Corporate Bond Index Tracker Fund	0.250%	0.000%	2.91%	£989	£2,978	£4,982	£10,065	£15,251	£20,541	£25,937	£31,443	£37,059	£42,789	£54,597
Atlas Emerging Markets Index Tracker Fund	0.400%	0.025%	5.70%	£1,001	£3,097	£5,327	£11,538	£18,782	£27,229	£37,080	£48,567	£61,964	£77,586	£117,048
Atlas Ethical Fund	0.930%	0.123%	4.90%	£997	£3,063	£5,226	£11,093	£17,679	£25,074	£33,376	£42,696	£53,160	£64,908	£92,904
Atlas Europe (ex UK) Equity Index Tracker Fund	0.300%	0.014%	4.90%	£997	£3,063	£5,226	£11,093	£17,679	£25,074	£33,376	£42,696	£53,160	£64,908	£92,904
Atlas Flexible Access Retirement Fund	0.560%	0.092%	1.59%	£983	£2,922	£4,827	£9,444	£13,859	£18,081	£22,120	£25,982	£29,676	£33,209	£39,819
Atlas Flexible Pre-Retirement Fund	0.350%	0.041%	2.74%	£988	£2,970	£4,962	£9,983	£15,062	£20,202	£25,402	£30,663	£35,985	£41,371	£52,333
Atlas Global Equity Index Tracker Fund	0.270%	0.006%	4.98%	£998	£3,066	£5,236	£11,136	£17,786	£25,280	£33,726	£43,244	£53,970	£66,058	£95,035
Atlas Inflation-Linked Annuity Target Fund	0.250%	0.041%	1.67%	£983	£2,925	£4,836	£9,480	£13,939	£18,220	£22,330	£26,277	£30,066	£33,705	£40,553
Atlas Japan Equity Index Tracker Fund	0.300%	0.007%	4.90%	£997	£3,063	£5,226	£11,093	£17,679	£25,074	£33,376	£42,696	£53,160	£64,908	£92,904
Atlas Level Annuity Target Fund	0.250%	0.026%	2.07%	£985	£2,942	£4,883	£9,664	£14,346	£18,931	£23,420	£27,816	£32,121	£36,335	£44,504
Atlas Multi Asset Absolute Return Fund	0.750%	0.377%	3.70%	£992	£3,011	£5,078	£10,460	£16,164	£22,211	£28,619	£35,412	£42,612	£50,243	£66,905
Atlas Multi Asset Portfolio 1	0.554%	0.248%	4.38%	£995	£3,040	£5,161	£10,813	£17,003	£23,782	£31,205	£39,335	£48,238	£57,988	£80,360
Atlas Multi Asset Portfolio 2	0.506%	0.204%	3.79%	£992	£3,015	£5,089	£10,506	£16,272	£22,411	£28,946	£35,903	£43,308	£51,192	£68,518

Series 3

Atlas Multi Asset Portfolio 3	0.467%	0.142%	3.21%	£990	£2,990	£5,018	£10,213	£15,590	£21,156	£26,918	£32,881	£39,054	£45,444	£58,905
Atlas North American Equity Index Tracker Fund	0.220%	0.000%	4.90%	£997	£3,063	£5,226	£11,093	£17,679	£25,074	£33,376	£42,696	£53,160	£64,908	£92,904
Atlas Over 15 Years Gilts Index Tracker Fund	0.250%	0.038%	0.90%	£980	£2,893	£4,748	£9,136	£13,192	£16,942	£20,408	£23,612	£26,573	£29,310	£34,180
Atlas Over 5 Years Index-Linked Gilts Index Tracker Fund	0.250%	0.102%	0.90%	£980	£2,893	£4,748	£9,136	£13,192	£16,942	£20,408	£23,612	£26,573	£29,310	£34,180
Atlas Passive Multi Asset Fund	0.470%	0.004%	4.02%	£993	£3,025	£5,117	£10,624	£16,553	£22,934	£29,802	£37,195	£45,153	£53,719	£72,862
Atlas Retirement Income Drawdown Fund	0.590%	0.041%	3.53%	£991	£3,004	£5,057	£10,373	£15,962	£21,838	£28,014	£34,508	£41,334	£48,510	£63,984
Atlas Shariah Compliant Fund	0.450%	0.025%	4.93%	£997	£3,064	£5,229	£11,109	£17,719	£25,151	£33,506	£42,900	£53,462	£65,336	£93,696
Atlas Sustainable Equity Fund	0.545%	0.467%	5.00%	£998	£3,067	£5,238	£11,147	£17,813	£25,332	£33,814	£43,382	£54,175	£66,350	£95,577
Atlas UK Direct Property Fund	0.750%	0.041%	3.34%	£990	£2,996	£5,034	£10,278	£15,740	£21,430	£27,357	£33,530	£39,961	£46,660	£60,905
Atlas UK Equity Index Tracker Fund	0.300%	0.000%	4.90%	£997	£3,063	£5,226	£11,093	£17,679	£25,074	£33,376	£42,696	£53,160	£64,908	£92,904
Atlas World (ex UK) Equity Index Tracker Fund	0.300%	0.000%	4.93%	£997	£3,064	£5,229	£11,109	£17,719	£25,151	£33,506	£42,900	£53,462	£65,336	£93,696

Notes for Anya's projected figures

- Projected pension account values are shown in today's terms, and do not need to be reduced further for the effect of future inflation.
- We have assumed that Anya has not yet built up anything in her pension account.
- She's currently 18 and in the first year (of the table above), she will contribute £1,000 into her pension account.
- Her contributions will increase every year by 2.5% and she will stop contributing when she reaches age 68.
- Inflation (the increase in the cost of living) is assumed to increase each year at a rate of 2.5%.
- These costs and charges are based on the year to 31/03/21.



Series 3

Projected pension account in today's money			After all charges + costs deducted											
Member D: Anya			Years (investment period)											
Fund	Total Expense Ratio	Transaction Costs	Assumed investment growth	1	3	5	10	15	20	25	30	35	40	68 th birthday 50
Atlas Active Corporate Bond Fund	0.510%	0.030%	2.42%	£986	£2,957	£4,924	£9,829	£14,715	£19,582	£24,430	£29,259	£34,069	£38,860	£48,387
Atlas Active Emerging Markets Equity Fund	1.170%	0.298%	4.04%	£994	£3,026	£5,119	£10,636	£16,580	£22,984	£29,885	£37,321	£45,333	£53,966	£73,292
Atlas Active Multi Asset Fund	0.600%	0.223%	2.94%	£989	£2,979	£4,986	£10,078	£15,281	£20,594	£26,022	£31,567	£37,231	£43,016	£54,963
Atlas Asia Pacific (ex Japan) Equity Index Tracker Fund	0.300%	0.017%	4.58%	£996	£3,049	£5,186	£10,921	£17,263	£24,276	£32,031	£40,607	£50,091	£60,578	£84,998
Atlas Cash Fund	0.250%	0.011%	0.64%	£978	£2,882	£4,718	£9,023	£12,951	£16,535	£19,805	£22,789	£25,512	£27,997	£32,332
Atlas Corporate Bond Index Tracker Fund	0.250%	0.000%	2.66%	£987	£2,967	£4,953	£9,944	£14,975	£20,045	£25,154	£30,304	£35,494	£40,724	£51,309
Atlas Emerging Markets Index Tracker Fund	0.400%	0.025%	5.27%	£999	£3,079	£5,273	£11,299	£18,186	£26,057	£35,053	£45,333	£57,083	£70,512	£103,399
Atlas Ethical Fund	0.930%	0.123%	3.85%	£993	£3,017	£5,096	£10,535	£16,341	£22,538	£29,154	£36,216	£43,753	£51,800	£69,556
Atlas Europe (ex UK) Equity Index Tracker Fund	0.300%	0.014%	4.59%	£996	£3,049	£5,187	£10,923	£17,268	£24,285	£32,046	£40,629	£50,123	£60,622	£85,079
Atlas Flexible Access Retirement Fund	0.560%	0.092%	0.94%	£980	£2,895	£4,752	£9,152	£13,228	£17,002	£20,497	£23,733	£26,730	£29,506	£34,457
Atlas Flexible Pre-Retirement Fund	0.350%	0.041%	2.35%	£986	£2,954	£4,916	£9,796	£14,640	£19,448	£24,222	£28,960	£33,663	£38,332	£47,568
Atlas Global Equity Index Tracker Fund	0.270%	0.006%	4.70%	£996	£3,054	£5,201	£10,986	£17,420	£24,577	£32,536	£41,389	£51,235	£62,186	£87,914
Atlas Inflation-Linked Annuity Target Fund	0.250%	0.041%	1.38%	£982	£2,913	£4,803	£9,348	£13,651	£17,723	£21,577	£25,225	£28,678	£31,946	£37,967
Atlas Japan Equity Index Tracker Fund	0.300%	0.007%	4.59%	£996	£3,049	£5,188	£10,927	£17,277	£24,302	£32,074	£40,674	£50,188	£60,714	£85,244
Atlas Level Annuity Target Fund	0.250%	0.026%	1.79%	£984	£2,931	£4,851	£9,537	£14,064	£18,437	£22,662	£26,744	£30,687	£34,496	£41,731
Atlas Multi Asset Absolute Return Fund	0.750%	0.377%	2.57%	£987	£2,963	£4,942	£9,902	£14,880	£19,875	£24,889	£29,920	£34,969	£40,036	£50,225
Atlas Multi Asset Portfolio 1	0.554%	0.248%	3.58%	£992	£3,006	£5,063	£10,398	£16,019	£21,943	£28,184	£34,761	£41,691	£48,993	£64,795
Atlas Multi Asset Portfolio 2	0.506%	0.204%	3.08%	£989	£2,985	£5,003	£10,149	£15,443	£20,888	£26,489	£32,250	£38,177	£44,273	£56,994
Atlas Multi Asset Portfolio 3	0.467%	0.142%	2.60%	£987	£2,964	£4,946	£9,916	£14,910	£19,929	£24,973	£30,042	£35,135	£40,254	£50,567

Series 3

Atlas North American Equity Index Tracker Fund	0.220%	0.000%	4.68%	£996	£3,053	£5,198	£10,973	£17,389	£24,517	£32,436	£41,233	£51,007	£61,865	£87,330
Atlas Over 15 Years Gilts Index Tracker Fund	0.250%	0.038%	0.61%	£978	£2,881	£4,715	£9,011	£12,926	£16,493	£19,744	£22,706	£25,405	£27,865	£32,148
Atlas Over 5 Years Index-Linked Gilts Index Tracker Fund	0.250%	0.102%	0.55%	£978	£2,879	£4,708	£8,984	£12,868	£16,396	£19,601	£22,512	£25,156	£27,558	£31,721
Atlas Passive Multi Asset Fund	0.470%	0.004%	3.55%	£991	£3,005	£5,059	£10,382	£15,981	£21,873	£28,071	£34,593	£41,454	£48,672	£64,256
Atlas Retirement Income Drawdown Fund	0.590%	0.041%	2.90%	£989	£2,977	£4,981	£10,060	£15,239	£20,519	£25,902	£31,392	£36,989	£42,696	£54,448
Atlas Shariah Compliant Fund	0.450%	0.025%	4.46%	£995	£3,043	£5,170	£10,853	£17,099	£23,964	£31,509	£39,801	£48,916	£58,933	£82,045
Atlas Sustainable Equity Fund	0.545%	0.467%	3.99%	£993	£3,023	£5,113	£10,608	£16,514	£22,861	£29,682	£37,013	£44,892	£53,360	£72,241
Atlas UK Direct Property Fund	0.750%	0.041%	2.55%	£987	£2,962	£4,940	£9,891	£14,854	£19,829	£24,816	£29,816	£34,827	£39,850	£49,932
Atlas UK Equity Index Tracker Fund	0.300%	0.000%	4.60%	£996	£3,050	£5,188	£10,930	£17,285	£24,318	£32,102	£40,716	£50,250	£60,801	£85,402
Atlas World (ex UK) Equity Index Tracker Fund	0.300%	0.000%	4.63%	£996	£3,051	£5,192	£10,946	£17,324	£24,393	£32,227	£40,909	£50,532	£61,198	£86,119

Notes for Anya's projected figures

- Projected pension account values are shown in today's terms, and do not need to be reduced further for the effect of future inflation.
- We have assumed that Anya has not yet built up anything in her pension account.
- She's currently 18 and in the first year (of the table above), she will contribute £1,000 into her pension account.
- Her contributions will increase every year by 2.5% and she will stop contributing when she reaches age 68.
- Inflation (the increase in the cost of living) is assumed to increase each year at a rate of 2.5%.
- These costs and charges are based on the year to 31/03/21.



Deferred members - Member E: Ben

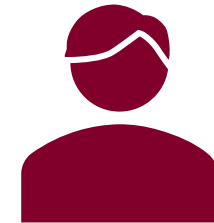
Projected pension account in today's money				Before Charges										
Member E: Ben				Years (investment period)										
Fund	Total Expense Ratio	Transaction Costs	Assumed investment growth	1	3	5	10	15	20	25	68 th birthday 28	30	35	40
Atlas Active Corporate Bond Fund	0.510%	0.030%	2.96%	£1,004	£1,014	£1,023	£1,046	£1,069	£1,094	£1,118	£1,134	£1,144	£1,170	£1,196
Atlas Active Emerging Markets Equity Fund	1.170%	0.298%	5.51%	£1,029	£1,091	£1,156	£1,336	£1,544	£1,784	£2,062	£2,249	£2,383	£2,754	£3,183
Atlas Active Multi Asset Fund	0.600%	0.223%	3.76%	£1,012	£1,037	£1,063	£1,130	£1,201	£1,277	£1,357	£1,408	£1,443	£1,534	£1,630
Atlas Asia Pacific (ex Japan) Equity Index Tracker Fund	0.300%	0.017%	4.90%	£1,023	£1,072	£1,123	£1,260	£1,415	£1,589	£1,784	£1,912	£2,002	£2,248	£2,524
Atlas Cash Fund	0.250%	0.011%	0.90%	£984	£954	£924	£854	£790	£730	£675	£644	£624	£577	£533
Atlas Corporate Bond Index Tracker Fund	0.250%	0.000%	2.91%	£1,004	£1,012	£1,020	£1,041	£1,062	£1,083	£1,105	£1,118	£1,127	£1,150	£1,173
Atlas Emerging Markets Index Tracker Fund	0.400%	0.025%	5.70%	£1,031	£1,097	£1,166	£1,360	£1,586	£1,849	£2,157	£2,365	£2,515	£2,933	£3,420
Atlas Ethical Fund	0.930%	0.123%	4.90%	£1,023	£1,072	£1,123	£1,260	£1,415	£1,589	£1,784	£1,912	£2,002	£2,248	£2,524
Atlas Europe (ex UK) Equity Index Tracker Fund	0.300%	0.014%	4.90%	£1,023	£1,072	£1,123	£1,260	£1,415	£1,589	£1,784	£1,912	£2,002	£2,248	£2,524
Atlas Flexible Access Retirement Fund	0.560%	0.092%	1.59%	£991	£974	£956	£915	£875	£837	£800	£779	£765	£732	£700
Atlas Flexible Pre-Retirement Fund	0.350%	0.041%	2.74%	£1,002	£1,007	£1,012	£1,024	£1,036	£1,048	£1,060	£1,068	£1,073	£1,085	£1,098
Atlas Global Equity Index Tracker Fund	0.270%	0.006%	4.98%	£1,024	£1,074	£1,127	£1,270	£1,431	£1,613	£1,818	£1,953	£2,049	£2,309	£2,602
Atlas Inflation-Linked Annuity Target Fund	0.250%	0.041%	1.67%	£992	£976	£960	£922	£885	£850	£816	£796	£784	£752	£722
Atlas Japan Equity Index Tracker Fund	0.300%	0.007%	4.90%	£1,023	£1,072	£1,123	£1,260	£1,415	£1,589	£1,784	£1,912	£2,002	£2,248	£2,524
Atlas Level Annuity Target Fund	0.250%	0.026%	2.07%	£996	£987	£979	£959	£939	£919	£900	£889	£882	£863	£845
Atlas Multi Asset Absolute Return Fund	0.750%	0.377%	3.70%	£1,012	£1,036	£1,060	£1,123	£1,191	£1,262	£1,338	£1,385	£1,418	£1,503	£1,593
Atlas Multi Asset Portfolio 1	0.554%	0.248%	4.38%	£1,018	£1,056	£1,095	£1,199	£1,313	£1,438	£1,575	£1,663	£1,725	£1,889	£2,069
Atlas Multi Asset Portfolio 2	0.506%	0.204%	3.79%	£1,013	£1,038	£1,065	£1,133	£1,206	£1,284	£1,367	£1,419	£1,455	£1,549	£1,649

Series 3

Atlas Multi Asset Portfolio 3	0.467%	0.142%	3.21%	£1,007	£1,021	£1,035	£1,071	£1,109	£1,148	£1,188	£1,213	£1,230	£1,273	£1,318
Atlas North American Equity Index Tracker Fund	0.220%	0.000%	4.90%	£1,023	£1,072	£1,123	£1,260	£1,415	£1,589	£1,784	£1,912	£2,002	£2,248	£2,524
Atlas Over 15 Years Gilts Index Tracker Fund	0.250%	0.038%	0.90%	£984	£954	£924	£854	£790	£730	£675	£644	£624	£577	£533
Atlas Over 5 Years Index-Linked Gilts Index Tracker Fund	0.250%	0.102%	0.90%	£984	£954	£924	£854	£790	£730	£675	£644	£624	£577	£533
Atlas Passive Multi Asset Fund	0.470%	0.004%	4.02%	£1,015	£1,045	£1,076	£1,159	£1,247	£1,342	£1,445	£1,510	£1,555	£1,674	£1,802
Atlas Retirement Income Drawdown Fund	0.590%	0.041%	3.53%	£1,010	£1,030	£1,051	£1,105	£1,162	£1,221	£1,284	£1,323	£1,350	£1,419	£1,492
Atlas Shariah Compliant Fund	0.450%	0.025%	4.93%	£1,024	£1,073	£1,124	£1,264	£1,421	£1,598	£1,796	£1,927	£2,020	£2,271	£2,553
Atlas Sustainable Equity Fund	0.545%	0.467%	5.00%	£1,024	£1,075	£1,128	£1,272	£1,435	£1,619	£1,827	£1,964	£2,060	£2,324	£2,622
Atlas UK Direct Property Fund	0.750%	0.041%	3.34%	£1,008	£1,025	£1,042	£1,085	£1,130	£1,177	£1,226	£1,257	£1,277	£1,331	£1,386
Atlas UK Equity Index Tracker Fund	0.300%	0.000%	4.90%	£1,023	£1,072	£1,123	£1,260	£1,415	£1,589	£1,784	£1,912	£2,002	£2,248	£2,524
Atlas World (ex UK) Equity Index Tracker Fund	0.300%	0.000%	4.93%	£1,024	£1,073	£1,124	£1,264	£1,421	£1,598	£1,796	£1,927	£2,020	£2,271	£2,553

Notes for Ben's projected figures

- Projected pension pot values are shown in today's terms, and do not need to be reduced further for the effect of future inflation.
- We have assumed that Ben is 40 and has built up a pot of £1,000.00.
- Inflation (the increase in the cost of living) is assumed to increase each year at a rate of 2.5%.
- These costs and charges are based on the year to 31/03/21.



Series 3

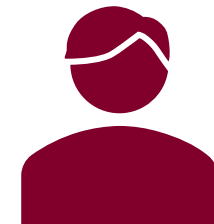
Projected pension account in today's money				After all charges + costs deducted										
Member E: Ben				Years (investment period)										
Fund	Total Expense Ratio	Transaction Costs	Assumed investment growth	1	3	5	10	15	20	25	68 th birthday 28	30	35	40
Atlas Active Corporate Bond Fund	0.510%	0.030%	2.42%	£999	£998	£996	£992	£988	£984	£981	£978	£977	£973	£969
Atlas Active Emerging Markets Equity Fund	1.170%	0.298%	4.04%	£1,015	£1,046	£1,078	£1,161	£1,251	£1,348	£1,452	£1,519	£1,565	£1,686	£1,817
Atlas Active Multi Asset Fund	0.600%	0.223%	2.94%	£1,004	£1,013	£1,021	£1,043	£1,066	£1,089	£1,112	£1,126	£1,136	£1,160	£1,185
Atlas Asia Pacific (ex Japan) Equity Index Tracker Fund	0.300%	0.017%	4.58%	£1,020	£1,062	£1,106	£1,223	£1,352	£1,495	£1,654	£1,756	£1,829	£2,022	£2,236
Atlas Cash Fund	0.250%	0.011%	0.64%	£982	£947	£912	£833	£760	£693	£633	£599	£577	£527	£481
Atlas Corporate Bond Index Tracker Fund	0.250%	0.000%	2.66%	£1,002	£1,005	£1,008	£1,016	£1,024	£1,032	£1,040	£1,045	£1,048	£1,056	£1,064
Atlas Emerging Markets Index Tracker Fund	0.400%	0.025%	5.27%	£1,027	£1,083	£1,143	£1,306	£1,493	£1,706	£1,950	£2,112	£2,228	£2,547	£2,911
Atlas Ethical Fund	0.930%	0.123%	3.85%	£1,013	£1,040	£1,067	£1,139	£1,216	£1,298	£1,386	£1,441	£1,479	£1,579	£1,686
Atlas Europe (ex UK) Equity Index Tracker Fund	0.300%	0.014%	4.59%	£1,020	£1,062	£1,106	£1,223	£1,353	£1,496	£1,655	£1,758	£1,830	£2,024	£2,239
Atlas Flexible Access Retirement Fund	0.560%	0.092%	0.94%	£985	£955	£926	£858	£794	£735	£681	£650	£631	£584	£541
Atlas Flexible Pre-Retirement Fund	0.350%	0.041%	2.35%	£999	£996	£993	£985	£978	£971	£964	£960	£957	£950	£943
Atlas Global Equity Index Tracker Fund	0.270%	0.006%	4.70%	£1,022	£1,066	£1,112	£1,237	£1,376	£1,530	£1,702	£1,814	£1,893	£2,106	£2,342
Atlas Inflation-Linked Annuity Target Fund	0.250%	0.041%	1.38%	£989	£968	£946	£896	£848	£803	£760	£735	£719	£680	£644
Atlas Japan Equity Index Tracker Fund	0.300%	0.007%	4.59%	£1,020	£1,063	£1,106	£1,224	£1,354	£1,498	£1,658	£1,761	£1,834	£2,029	£2,245
Atlas Level Annuity Target Fund	0.250%	0.026%	1.79%	£993	£979	£966	£933	£902	£871	£841	£824	£813	£785	£759
Atlas Multi Asset Absolute Return Fund	0.750%	0.377%	2.57%	£1,001	£1,002	£1,004	£1,007	£1,011	£1,014	£1,018	£1,020	£1,022	£1,025	£1,029
Atlas Multi Asset Portfolio 1	0.554%	0.248%	3.58%	£1,011	£1,032	£1,054	£1,110	£1,170	£1,233	£1,299	£1,340	£1,369	£1,442	£1,520
Atlas Multi Asset Portfolio 2	0.506%	0.204%	3.08%	£1,006	£1,017	£1,029	£1,058	£1,088	£1,120	£1,152	£1,171	£1,185	£1,219	£1,253
Atlas Multi Asset Portfolio 3	0.467%	0.142%	2.60%	£1,001	£1,003	£1,005	£1,010	£1,015	£1,020	£1,025	£1,028	£1,030	£1,035	£1,040

Series 3

Atlas North American Equity Index Tracker Fund	0.220%	0.000%	4.68%	£1,021	£1,065	£1,111	£1,234	£1,371	£1,523	£1,692	£1,803	£1,880	£2,089	£2,321
Atlas Over 15 Years Gilts Index Tracker Fund	0.250%	0.038%	0.61%	£982	£946	£911	£830	£757	£689	£628	£594	£572	£522	£475
Atlas Over 5 Years Index-Linked Gilts Index Tracker Fund	0.250%	0.102%	0.55%	£981	£944	£908	£825	£749	£681	£618	£584	£562	£510	£463
Atlas Passive Multi Asset Fund	0.470%	0.004%	3.55%	£1,010	£1,031	£1,052	£1,107	£1,165	£1,225	£1,289	£1,329	£1,356	£1,427	£1,501
Atlas Retirement Income Drawdown Fund	0.590%	0.041%	2.90%	£1,004	£1,012	£1,020	£1,040	£1,060	£1,081	£1,102	£1,115	£1,124	£1,146	£1,168
Atlas Shariah Compliant Fund	0.450%	0.025%	4.46%	£1,019	£1,058	£1,099	£1,208	£1,328	£1,459	£1,604	£1,697	£1,763	£1,937	£2,129
Atlas Sustainable Equity Fund	0.545%	0.467%	3.99%	£1,015	£1,044	£1,075	£1,155	£1,241	£1,334	£1,434	£1,497	£1,541	£1,656	£1,780
Atlas UK Direct Property Fund	0.750%	0.041%	2.55%	£1,000	£1,001	£1,002	£1,005	£1,007	£1,010	£1,012	£1,014	£1,014	£1,017	£1,019
Atlas UK Equity Index Tracker Fund	0.300%	0.000%	4.60%	£1,020	£1,063	£1,107	£1,225	£1,356	£1,500	£1,660	£1,764	£1,838	£2,034	£2,251
Atlas World (ex UK) Equity Index Tracker Fund	0.300%	0.000%	4.63%	£1,021	£1,064	£1,108	£1,228	£1,361	£1,509	£1,672	£1,779	£1,853	£2,054	£2,277

Notes for Ben's projected figures

- Projected pension pot values are shown in today's terms, and do not need to be reduced further for the effect of future inflation.
- We have assumed that Ben is 40 and has built up a pot of £1,000.00.
- Inflation (the increase in the cost of living) is assumed to increase each year at a rate of 2.5%.
- These costs and charges are based on the year to 31/03/21.



Member F: Laura

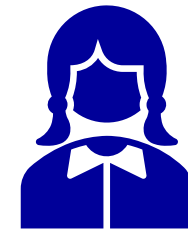
Projected pension account in today's money				Before Charges										
Member F: Laura				Years (investment period)										
Fund	Total Expense Ratio	Transaction Costs	Assumed Investment Growth	1	3	5	10	15	20	25	30	35	68 th birthday 38	40
Atlas Active Corporate Bond Fund	0.510%	0.030%	2.96%	£502	£507	£511	£523	£535	£547	£559	£572	£585	£593	£598
Atlas Active Emerging Markets Equity Fund	1.170%	0.298%	5.51%	£515	£545	£578	£668	£772	£892	£1,031	£1,191	£1,377	£1,502	£1,591
Atlas Active Multi Asset Fund	0.600%	0.223%	3.76%	£506	£519	£531	£565	£601	£638	£679	£721	£767	£795	£815
Atlas Asia Pacific (ex Japan) Equity Index Tracker Fund	0.300%	0.017%	4.90%	£512	£536	£561	£630	£708	£794	£892	£1,001	£1,124	£1,205	£1,262
Atlas Cash Fund	0.250%	0.011%	0.90%	£492	£477	£462	£427	£395	£365	£337	£312	£288	£275	£266
Atlas Corporate Bond Index Tracker Fund	0.250%	0.000%	2.91%	£502	£506	£510	£520	£531	£542	£552	£564	£575	£582	£587
Atlas Emerging Markets Index Tracker Fund	0.400%	0.025%	5.70%	£516	£548	£583	£680	£793	£925	£1,078	£1,257	£1,466	£1,608	£1,710
Atlas Ethical Fund	0.930%	0.123%	4.90%	£512	£536	£561	£630	£708	£794	£892	£1,001	£1,124	£1,205	£1,262
Atlas Europe (ex UK) Equity Index Tracker Fund	0.300%	0.014%	4.90%	£512	£536	£561	£630	£708	£794	£892	£1,001	£1,124	£1,205	£1,262
Atlas Flexible Access Retirement Fund	0.560%	0.092%	1.59%	£496	£487	£478	£457	£437	£418	£400	£383	£366	£356	£350
Atlas Flexible Pre-Retirement Fund	0.350%	0.041%	2.74%	£501	£504	£506	£512	£518	£524	£530	£536	£543	£546	£549
Atlas Global Equity Index Tracker Fund	0.270%	0.006%	4.98%	£512	£537	£563	£635	£716	£807	£909	£1,024	£1,154	£1,240	£1,301
Atlas Inflation-Linked Annuity Target Fund	0.250%	0.041%	1.67%	£496	£488	£480	£461	£443	£425	£408	£392	£376	£367	£361
Atlas Japan Equity Index Tracker Fund	0.300%	0.007%	4.90%	£512	£536	£561	£630	£708	£794	£892	£1,001	£1,124	£1,205	£1,262
Atlas Level Annuity Target Fund	0.250%	0.026%	2.07%	£498	£494	£490	£479	£469	£460	£450	£441	£432	£426	£423
Atlas Multi Asset Absolute Return Fund	0.750%	0.377%	3.70%	£506	£518	£530	£562	£595	£631	£669	£709	£751	£778	£796
Atlas Multi Asset Portfolio 1	0.554%	0.248%	4.38%	£509	£528	£548	£600	£657	£719	£788	£863	£945	£998	£1,034
Atlas Multi Asset Portfolio 2	0.506%	0.204%	3.79%	£506	£519	£532	£567	£603	£642	£684	£728	£775	£804	£825
Atlas Multi Asset Portfolio 3	0.467%	0.142%	3.21%	£503	£510	£518	£536	£555	£574	£594	£615	£637	£650	£659

Series 3

Atlas North American Equity Index Tracker Fund	0.220%	0.000%	4.90%	£512	£536	£561	£630	£708	£794	£892	£1,001	£1,124	£1,205	£1,262
Atlas Over 15 Years Gilts Index Tracker Fund	0.250%	0.038%	0.90%	£492	£477	£462	£427	£395	£365	£337	£312	£288	£275	£266
Atlas Over 5 Years Index-Linked Gilts Index Tracker Fund	0.250%	0.102%	0.90%	£492	£477	£462	£427	£395	£365	£337	£312	£288	£275	£266
Atlas Passive Multi Asset Fund	0.470%	0.004%	4.02%	£507	£523	£538	£579	£624	£671	£722	£778	£837	£875	£901
Atlas Retirement Income Drawdown Fund	0.590%	0.041%	3.53%	£505	£515	£526	£553	£581	£611	£642	£675	£709	£731	£746
Atlas Shariah Compliant Fund	0.450%	0.025%	4.93%	£512	£536	£562	£632	£711	£799	£898	£1,010	£1,135	£1,218	£1,276
Atlas Sustainable Equity Fund	0.545%	0.467%	5.00%	£512	£537	£564	£636	£718	£810	£913	£1,030	£1,162	£1,249	£1,311
Atlas UK Direct Property Fund	0.750%	0.041%	3.34%	£504	£512	£521	£543	£565	£589	£613	£639	£665	£682	£693
Atlas UK Equity Index Tracker Fund	0.300%	0.000%	4.90%	£512	£536	£561	£630	£708	£794	£892	£1,001	£1,124	£1,205	£1,262
Atlas World (ex UK) Equity Index Tracker Fund	0.300%	0.000%	4.93%	£512	£536	£562	£632	£711	£799	£898	£1,010	£1,135	£1,218	£1,276

Notes for Laura's projected figures

- Projected pension pot values are shown in today's terms, and do not need to be reduced further for the effect of future inflation.
- We have assumed that Laura is 30 and has built up a pot of £500.00.
- Inflation (the increase in the cost of living) is assumed to increase each year at a rate of 2.5%.
- These costs and charges are based on the year to 31/03/21.



Series 3

Projected pension account in today's money				After all charges + costs deducted										
Member F: Laura				Years (investment period)										
Fund	Total Expense Ratio	Transaction Costs	Assumed Investment Growth	1	3	5	10	15	20	25	30	35	68 th birthday 38	40
Atlas Active Corporate Bond Fund	0.510%	0.030%	2.42%	£500	£499	£498	£496	£494	£492	£490	£488	£487	£485	£485
Atlas Active Emerging Markets Equity Fund	1.170%	0.298%	4.04%	£508	£523	£539	£581	£626	£674	£726	£783	£843	£882	£909
Atlas Active Multi Asset Fund	0.600%	0.223%	2.94%	£502	£506	£511	£522	£533	£544	£556	£568	£580	£588	£593
Atlas Asia Pacific (ex Japan) Equity Index Tracker Fund	0.300%	0.017%	4.58%	£510	£531	£553	£611	£676	£748	£827	£914	£1,011	£1,074	£1,118
Atlas Cash Fund	0.250%	0.011%	0.64%	£491	£473	£456	£416	£380	£347	£316	£289	£263	£249	£240
Atlas Corporate Bond Index Tracker Fund	0.250%	0.000%	2.66%	£501	£502	£504	£508	£512	£516	£520	£524	£528	£531	£532
Atlas Emerging Markets Index Tracker Fund	0.400%	0.025%	5.27%	£514	£542	£571	£653	£746	£853	£975	£1,114	£1,273	£1,380	£1,455
Atlas Ethical Fund	0.930%	0.123%	3.85%	£507	£520	£534	£570	£608	£649	£693	£740	£790	£821	£843
Atlas Europe (ex UK) Equity Index Tracker Fund	0.300%	0.014%	4.59%	£510	£531	£553	£612	£676	£748	£827	£915	£1,012	£1,075	£1,119
Atlas Flexible Access Retirement Fund	0.560%	0.092%	0.94%	£492	£477	£463	£429	£397	£368	£341	£315	£292	£279	£270
Atlas Flexible Pre-Retirement Fund	0.350%	0.041%	2.35%	£499	£498	£496	£493	£489	£485	£482	£478	£475	£473	£471
Atlas Global Equity Index Tracker Fund	0.270%	0.006%	4.70%	£511	£533	£556	£619	£688	£765	£851	£947	£1,053	£1,122	£1,171
Atlas Inflation-Linked Annuity Target Fund	0.250%	0.041%	1.38%	£495	£484	£473	£448	£424	£401	£380	£359	£340	£329	£322
Atlas Japan Equity Index Tracker Fund	0.300%	0.007%	4.59%	£510	£531	£553	£612	£677	£749	£829	£917	£1,015	£1,078	£1,122
Atlas Level Annuity Target Fund	0.250%	0.026%	1.79%	£497	£490	£483	£467	£451	£435	£421	£406	£393	£385	£379
Atlas Multi Asset Absolute Return Fund	0.750%	0.377%	2.57%	£500	£501	£502	£504	£505	£507	£509	£511	£513	£514	£514
Atlas Multi Asset Portfolio 1	0.554%	0.248%	3.58%	£505	£516	£527	£555	£585	£616	£649	£684	£721	£744	£760
Atlas Multi Asset Portfolio 2	0.506%	0.204%	3.08%	£503	£509	£514	£529	£544	£560	£576	£592	£609	£620	£627
Atlas Multi Asset Portfolio 3	0.467%	0.142%	2.60%	£500	£501	£502	£505	£507	£510	£512	£515	£517	£519	£520
Atlas North American Equity Index Tracker Fund	0.220%	0.000%	4.68%	£511	£533	£555	£617	£686	£762	£846	£940	£1,044	£1,112	£1,160

Series 3

Atlas Over 15 Years Gilts Index Tracker Fund	0.250%	0.038%	0.61%	£491	£473	£456	£415	£378	£345	£314	£286	£261	£247	£238
Atlas Over 5 Years Index-Linked Gilts Index Tracker Fund	0.250%	0.102%	0.55%	£490	£472	£454	£413	£375	£340	£309	£281	£255	£241	£232
Atlas Passive Multi Asset Fund	0.470%	0.004%	3.55%	£505	£515	£526	£553	£582	£613	£645	£678	£713	£735	£751
Atlas Retirement Income Drawdown Fund	0.590%	0.041%	2.90%	£502	£506	£510	£520	£530	£540	£551	£562	£573	£580	£584
Atlas Shariah Compliant Fund	0.450%	0.025%	4.46%	£510	£529	£550	£604	£664	£730	£802	£881	£969	£1,025	£1,065
Atlas Sustainable Equity Fund	0.545%	0.467%	3.99%	£507	£522	£537	£578	£621	£667	£717	£771	£828	£865	£890
Atlas UK Direct Property Fund	0.750%	0.041%	2.55%	£500	£501	£501	£502	£504	£505	£506	£507	£508	£509	£510
Atlas UK Equity Index Tracker Fund	0.300%	0.000%	4.60%	£510	£531	£553	£612	£678	£750	£830	£919	£1,017	£1,081	£1,125
Atlas World (ex UK) Equity Index Tracker Fund	0.300%	0.000%	4.63%	£510	£532	£554	£614	£681	£754	£836	£927	£1,027	£1,092	£1,138

Notes for Laura’s projected figures

- Projected pension pot values are shown in today's terms, and do not need to be reduced further for the effect of future inflation.
- We have assumed that Laura is 30 and has built up a pot of £500.00.
- Inflation (the increase in the cost of living) is assumed to increase each year at a rate of 2.5%.
- These costs and charges are based on the year to 31/03/21.



Member G: Eoin

Projected pension account in today's money				Before Charges										
Member G: Eoin				Years (investment period)										
Fund	Total Expense Ratio	Transaction Costs	Assumed Investment Growth	1	3	5	10	15	20	68 th birthday 23	25	30	35	40
Atlas Active Corporate Bond Fund	0.510%	0.030%	2.96%	£1,256	£1,267	£1,278	£1,307	£1,337	£1,367	£1,386	£1,398	£1,430	£1,462	£1,495
Atlas Active Emerging Markets Equity Fund	1.170%	0.298%	5.51%	£1,287	£1,363	£1,445	£1,670	£1,930	£2,230	£2,432	£2,577	£2,979	£3,442	£3,978
Atlas Active Multi Asset Fund	0.600%	0.223%	3.76%	£1,265	£1,297	£1,329	£1,412	£1,501	£1,596	£1,656	£1,697	£1,803	£1,917	£2,038
Atlas Asia Pacific (ex Japan) Equity Index Tracker Fund	0.300%	0.017%	4.90%	£1,279	£1,340	£1,403	£1,576	£1,769	£1,986	£2,129	£2,229	£2,503	£2,810	£3,155
Atlas Cash Fund	0.250%	0.011%	0.90%	£1,230	£1,192	£1,155	£1,068	£987	£913	£870	£844	£780	£721	£666
Atlas Corporate Bond Index Tracker Fund	0.250%	0.000%	2.91%	£1,255	£1,265	£1,275	£1,301	£1,327	£1,354	£1,370	£1,381	£1,409	£1,437	£1,466
Atlas Emerging Markets Index Tracker Fund	0.400%	0.025%	5.70%	£1,289	£1,371	£1,458	£1,700	£1,982	£2,312	£2,535	£2,696	£3,144	£3,666	£4,275
Atlas Ethical Fund	0.930%	0.123%	4.90%	£1,279	£1,340	£1,403	£1,576	£1,769	£1,986	£2,129	£2,229	£2,503	£2,810	£3,155
Atlas Europe (ex UK) Equity Index Tracker Fund	0.300%	0.014%	4.90%	£1,279	£1,340	£1,403	£1,576	£1,769	£1,986	£2,129	£2,229	£2,503	£2,810	£3,155
Atlas Flexible Access Retirement Fund	0.560%	0.092%	1.59%	£1,239	£1,217	£1,195	£1,143	£1,093	£1,046	£1,018	£1,000	£957	£915	£875
Atlas Flexible Pre-Retirement Fund	0.350%	0.041%	2.74%	£1,253	£1,259	£1,265	£1,280	£1,295	£1,310	£1,319	£1,325	£1,341	£1,357	£1,373
Atlas Global Equity Index Tracker Fund	0.270%	0.006%	4.98%	£1,280	£1,343	£1,409	£1,588	£1,789	£2,016	£2,166	£2,272	£2,561	£2,886	£3,253
Atlas Inflation-Linked Annuity Target Fund	0.250%	0.041%	1.67%	£1,240	£1,220	£1,200	£1,152	£1,106	£1,062	£1,037	£1,020	£979	£940	£903
Atlas Japan Equity Index Tracker Fund	0.300%	0.007%	4.90%	£1,279	£1,340	£1,403	£1,576	£1,769	£1,986	£2,129	£2,229	£2,503	£2,810	£3,155
Atlas Level Annuity Target Fund	0.250%	0.026%	2.07%	£1,245	£1,234	£1,224	£1,199	£1,174	£1,149	£1,135	£1,125	£1,102	£1,079	£1,057
Atlas Multi Asset Absolute Return Fund	0.750%	0.377%	3.70%	£1,265	£1,294	£1,325	£1,404	£1,488	£1,578	£1,634	£1,672	£1,772	£1,879	£1,991
Atlas Multi Asset Portfolio 1	0.554%	0.248%	4.38%	£1,273	£1,320	£1,369	£1,499	£1,642	£1,798	£1,899	£1,969	£2,156	£2,361	£2,586
Atlas Multi Asset Portfolio 2	0.506%	0.204%	3.79%	£1,266	£1,298	£1,331	£1,417	£1,508	£1,605	£1,667	£1,709	£1,819	£1,937	£2,061
Atlas Multi Asset Portfolio 3	0.467%	0.142%	3.21%	£1,259	£1,276	£1,294	£1,339	£1,386	£1,435	£1,465	£1,485	£1,538	£1,592	£1,648

Series 3

Atlas North American Equity Index Tracker Fund	0.220%	0.000%	4.90%	£1,279	£1,340	£1,403	£1,576	£1,769	£1,986	£2,129	£2,229	£2,503	£2,810	£3,155
Atlas Over 15 Years Gilts Index Tracker Fund	0.250%	0.038%	0.90%	£1,230	£1,192	£1,155	£1,068	£987	£913	£870	£844	£780	£721	£666
Atlas Over 5 Years Index-Linked Gilts Index Tracker Fund	0.250%	0.102%	0.90%	£1,230	£1,192	£1,155	£1,068	£987	£913	£870	£844	£780	£721	£666
Atlas Passive Multi Asset Fund	0.470%	0.004%	4.02%	£1,269	£1,306	£1,345	£1,448	£1,559	£1,678	£1,754	£1,806	£1,944	£2,092	£2,252
Atlas Retirement Income Drawdown Fund	0.590%	0.041%	3.53%	£1,263	£1,288	£1,314	£1,381	£1,452	£1,527	£1,573	£1,605	£1,687	£1,774	£1,865
Atlas Shariah Compliant Fund	0.450%	0.025%	4.93%	£1,280	£1,341	£1,405	£1,580	£1,776	£1,997	£2,143	£2,245	£2,525	£2,838	£3,191
Atlas Sustainable Equity Fund	0.545%	0.467%	5.00%	£1,280	£1,344	£1,410	£1,591	£1,794	£2,024	£2,176	£2,283	£2,576	£2,905	£3,277
Atlas UK Direct Property Fund	0.750%	0.041%	3.34%	£1,260	£1,281	£1,302	£1,356	£1,413	£1,472	£1,508	£1,533	£1,597	£1,663	£1,733
Atlas UK Equity Index Tracker Fund	0.300%	0.000%	4.90%	£1,279	£1,340	£1,403	£1,576	£1,769	£1,986	£2,129	£2,229	£2,503	£2,810	£3,155
Atlas World (ex UK) Equity Index Tracker Fund	0.300%	0.000%	4.93%	£1,280	£1,341	£1,405	£1,580	£1,776	£1,997	£2,143	£2,245	£2,525	£2,838	£3,191

Notes for Eoin's projected figures

- Projected pension pot values are shown in today's terms, and do not need to be reduced further for the effect of future inflation
- We have assumed that Eoin is 45 and has built up a pot of £1,250.00
- Inflation (the increase in the cost of living) is assumed to increase each year at a rate of 2.5%
- These costs and charges are based on the year to 31/03/21



Series 3

Projected pension account in today's money				After all charges + costs deducted										
Member G: Eoin				Years (investment period)										
Fund	Total Expense Ratio	Transaction Costs	Assumed Investment Growth	1	3	5	10	15	20	68 th birthday 23	25	30	35	40
Atlas Active Corporate Bond Fund	0.510%	0.030%	2.42%	£1,249	£1,247	£1,245	£1,240	£1,235	£1,231	£1,228	£1,226	£1,221	£1,216	£1,212
Atlas Active Emerging Markets Equity Fund	1.170%	0.298%	4.04%	£1,269	£1,307	£1,347	£1,451	£1,564	£1,685	£1,762	£1,816	£1,956	£2,108	£2,271
Atlas Active Multi Asset Fund	0.600%	0.223%	2.94%	£1,255	£1,266	£1,277	£1,304	£1,332	£1,361	£1,378	£1,390	£1,420	£1,451	£1,482
Atlas Asia Pacific (ex Japan) Equity Index Tracker Fund	0.300%	0.017%	4.58%	£1,275	£1,328	£1,382	£1,529	£1,690	£1,869	£1,985	£2,067	£2,286	£2,528	£2,795
Atlas Cash Fund	0.250%	0.011%	0.64%	£1,227	£1,183	£1,141	£1,041	£950	£866	£820	£791	£721	£658	£601
Atlas Corporate Bond Index Tracker Fund	0.250%	0.000%	2.66%	£1,252	£1,256	£1,260	£1,270	£1,280	£1,290	£1,296	£1,300	£1,310	£1,320	£1,330
Atlas Emerging Markets Index Tracker Fund	0.400%	0.025%	5.27%	£1,284	£1,354	£1,429	£1,633	£1,866	£2,133	£2,311	£2,437	£2,786	£3,183	£3,638
Atlas Ethical Fund	0.930%	0.123%	3.85%	£1,266	£1,300	£1,334	£1,424	£1,520	£1,623	£1,688	£1,732	£1,849	£1,974	£2,107
Atlas Europe (ex UK) Equity Index Tracker Fund	0.300%	0.014%	4.59%	£1,275	£1,328	£1,383	£1,529	£1,691	£1,870	£1,987	£2,069	£2,288	£2,530	£2,799
Atlas Flexible Access Retirement Fund	0.560%	0.092%	0.94%	£1,231	£1,194	£1,158	£1,072	£993	£919	£878	£851	£788	£730	£676
Atlas Flexible Pre-Retirement Fund	0.350%	0.041%	2.35%	£1,248	£1,244	£1,241	£1,232	£1,223	£1,214	£1,208	£1,205	£1,196	£1,187	£1,179
Atlas Global Equity Index Tracker Fund	0.270%	0.006%	4.70%	£1,277	£1,332	£1,390	£1,546	£1,720	£1,913	£2,039	£2,128	£2,366	£2,632	£2,927
Atlas Inflation-Linked Annuity Target Fund	0.250%	0.041%	1.38%	£1,236	£1,209	£1,183	£1,120	£1,060	£1,003	£971	£950	£899	£851	£805
Atlas Japan Equity Index Tracker Fund	0.300%	0.007%	4.59%	£1,276	£1,328	£1,383	£1,530	£1,693	£1,873	£1,990	£2,072	£2,293	£2,536	£2,806
Atlas Level Annuity Target Fund	0.250%	0.026%	1.79%	£1,241	£1,224	£1,208	£1,167	£1,127	£1,089	£1,066	£1,052	£1,016	£982	£948
Atlas Multi Asset Absolute Return Fund	0.750%	0.377%	2.57%	£1,251	£1,253	£1,254	£1,259	£1,263	£1,268	£1,271	£1,272	£1,277	£1,282	£1,286
Atlas Multi Asset Portfolio 1	0.554%	0.248%	3.58%	£1,263	£1,290	£1,317	£1,388	£1,462	£1,541	£1,590	£1,624	£1,711	£1,803	£1,900
Atlas Multi Asset Portfolio 2	0.506%	0.204%	3.08%	£1,257	£1,271	£1,286	£1,323	£1,360	£1,399	£1,423	£1,440	£1,481	£1,523	£1,567
Atlas Multi Asset Portfolio 3	0.467%	0.142%	2.60%	£1,251	£1,254	£1,256	£1,262	£1,269	£1,275	£1,279	£1,281	£1,287	£1,294	£1,300
Atlas North American Equity Index Tracker Fund	0.220%	0.000%	4.68%	£1,277	£1,331	£1,389	£1,543	£1,714	£1,904	£2,028	£2,115	£2,350	£2,611	£2,901

Series 3

Atlas Over 15 Years Gilts Index Tracker Fund	0.250%	0.038%	0.61%	£1,227	£1,182	£1,139	£1,038	£946	£862	£815	£785	£716	£652	£594
Atlas Over 5 Years Index-Linked Gilts Index Tracker Fund	0.250%	0.102%	0.55%	£1,226	£1,180	£1,135	£1,031	£937	£851	£803	£773	£702	£638	£579
Atlas Passive Multi Asset Fund	0.470%	0.004%	3.55%	£1,263	£1,289	£1,315	£1,384	£1,456	£1,532	£1,579	£1,611	£1,695	£1,784	£1,876
Atlas Retirement Income Drawdown Fund	0.590%	0.041%	2.90%	£1,255	£1,265	£1,275	£1,300	£1,325	£1,351	£1,367	£1,378	£1,405	£1,432	£1,460
Atlas Shariah Compliant Fund	0.450%	0.025%	4.46%	£1,274	£1,323	£1,374	£1,510	£1,660	£1,824	£1,930	£2,005	£2,203	£2,422	£2,662
Atlas Sustainable Equity Fund	0.545%	0.467%	3.99%	£1,268	£1,305	£1,343	£1,444	£1,552	£1,668	£1,741	£1,792	£1,926	£2,070	£2,225
Atlas UK Direct Property Fund	0.750%	0.041%	2.55%	£1,251	£1,252	£1,253	£1,256	£1,259	£1,262	£1,264	£1,265	£1,268	£1,271	£1,274
Atlas UK Equity Index Tracker Fund	0.300%	0.000%	4.60%	£1,276	£1,328	£1,383	£1,531	£1,694	£1,875	£1,993	£2,075	£2,297	£2,542	£2,813
Atlas World (ex UK) Equity Index Tracker Fund	0.300%	0.000%	4.63%	£1,276	£1,330	£1,385	£1,535	£1,702	£1,886	£2,006	£2,090	£2,317	£2,568	£2,846

Notes for Eoin's projected figures

- Projected pension pot values are shown in today's terms, and do not need to be reduced further for the effect of future inflation
- We have assumed that Eoin is 45 and has built up a pot of £1,250.00
- Inflation (the increase in the cost of living) is assumed to increase each year at a rate of 2.5%
- These costs and charges are based on the year to 31/03/21



DRAWDOWN EXAMPLE: Member H: Nasser

Projected pension account in today's money				Before Charges										
Member H: Nasser				Years (drawdown period)										
Fund	Total Expense Ratio	Transaction Costs	Assumed Investment Growth	1	3	5	10	15	20	25	30	31	32	50
Atlas Multi Asset Portfolio 3	0.467%	0.142%	3.21%	£96,733	£90,131	£83,438	£66,294	£48,548	£30,180	£11,166	-£8,516	-£12,535	-£16,581	-£94,402
Projected pension account in today's money				After all charges + costs deducted										
Member H: Nasser				Years (drawdown period)										
Fund	Total Expense Ratio	Transaction Costs	Assumed Investment Growth	1	3	5	10	15	20	25	27	28	29	30
Atlas Multi Asset Portfolio 3	0.467%	0.142%	2.60%	£96,150	£88,437	£80,710	£61,325	£41,845	£22,268	£2,595	-£5,301	-£9,255	-£13,213	-£17,174

Notes for Nasser's projected drawdown figures

- Projected pension account values are shown in today's terms, and do not need to be reduced further for the effect of future inflation.
- We have assumed that Nasser starts off with a pension account of £100,000
- He's currently 68 and we have assumed that he will take a drawdown income of £4,000 a year which increases in line with inflation.
- Inflation (the increase in the cost of living) is assumed to increase each year at a rate of 2.5%.
- These costs and charges are based on the year to 31/03/21.
- You can see from the tables above that the drawdown income will run out when Nasser's pension account has reduced to zero. So, if we take into account all costs and charges deducted, this will be after 26 years of retirement – i.e. when Nasser is 94.

